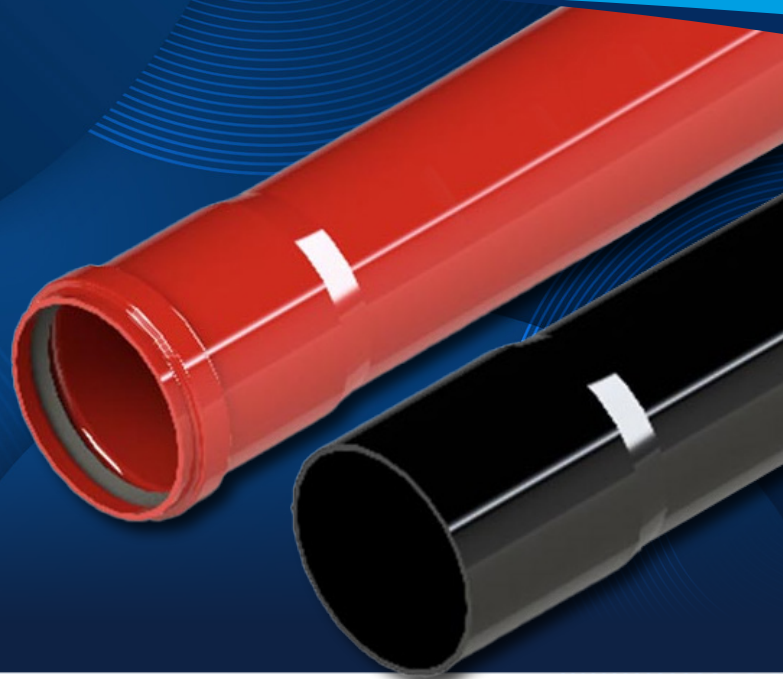




UPVC DUCT - POWER

POWERPROTECT+



Emtelle uPVC Power Duct is designed, manufactured and supplied within an Integrated Management System, incorporating internationally recognised Standards including ISO 9001:2015, ISO 14001:2015 and ISO 45001:2018.

APPLICATION

The duct is designed to comply with ENATS 12-24 (Class 1 & 2) Industry Standard.

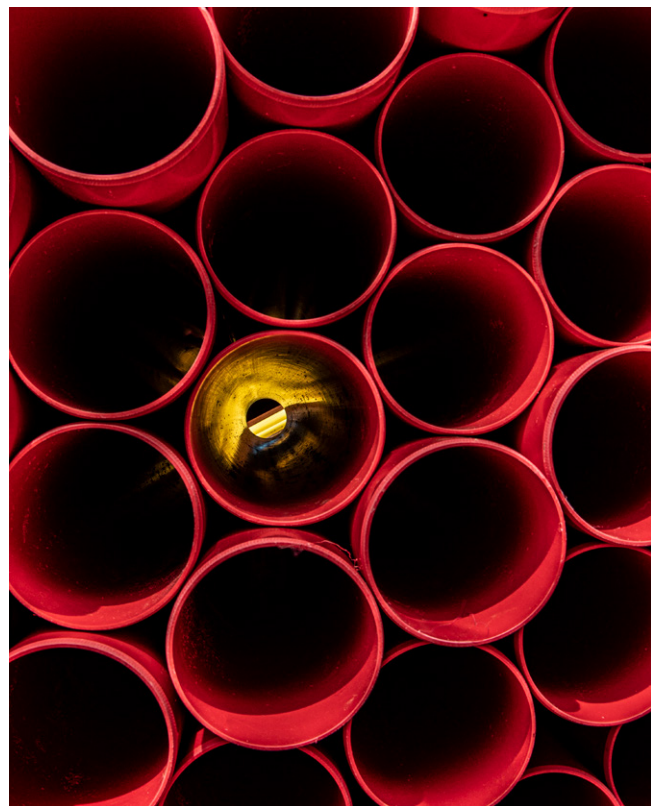
uPVC Power duct is available with 2 socket types; Standard interference Socket (IP4X), and also Emtelle's innovative new Interference Ring Seal (IRS) Socket (IP-68). Additional information on this new socket can be found in specification EF450-019.

Duct systems are printed with standard markings, including any additional information required by the customer, to give durability and traceability after installation. Standard length of a duct is 3m or 6m.

COLOURS

Colour fastness and UV stability for UK and Ireland only, for 12 months external storage unless otherwise agreed by customer specification.

Standard colours are Black & Red. Other colours available upon request.



MATERIAL & TECHNICAL DATA

Raw Materials are uPVC resin and other additives suitable for the required properties of the finished product.

Test	Method	Requirement
Print Marking (Type Test)	ENATS 12-24 Section 7.6 <i>Compliance is checked by rubbing the marking by hand for 15s with a piece of cloth soaked in water. Test is repeated with cloth soaked in petroleum spirit.</i>	Pass
Dimensional Checks (Routine Test)	ENATS 12-24 Section 8 <i>Compliance is checked via Calibrated ring gauges, socket go, no-go gauges.</i>	Pass
Construction (Routine Test)	ENATS 12-24 Section 9 <i>Compliance is checked via visual inspection – there shall be no sharp edges, burrs, or surface protrusions with are likely to damage installed cables.</i>	Pass
Compression Test (Sample Test)	ENATS 12-24 Section 10.2 <i>Compliance is checked by compressing 200mm sample between 2 steel plates. Record force required to compress by 5%</i>	Class 2: 450N @ 50degC Class1: 450N @ 75degC
Impact Test (Sample Test)	ENATS 12-24 Section 10.3 <i>Compliance is checked by striking x12 samples measuring 200mm in length which are conditioned to -5deg C for 2hrs. Impact 5kg at height of 570mm</i>	91-140mm OD: 28J @ -5degC >140mm OD: 40J @ -5degC
Ingress Protection (Type Test)	ENATS 12-24 Section 14 <i>Compliance is checked in accordance with BS EN 60529</i>	IF Socket: IP4X IRS Socket: IP68
Vicat Softening Temperature (Type Test)	ENATS 12-24 Section 16.2 <i>BS EN ISO 2507-1:2017, Thermoplastics pipes and fittings. Vicat softening temperature. 47 General test method</i>	>75degC
Static Friction Coefficient (Type Test)	ENATS 12-24 Section 16.3 <i>Compliance is checked via test method described in ENATS 12-24 section 16.3.3</i>	<0.27
Heat Reversion (Sample Test)	ENATS 12-24 Section 16.5 <i>Compliance is checked via air circulating over. 300mm uPVC duct sample is heated to 150deg C for 1hr.</i>	<5mm change

PACKAGING AND LABELLING

All products suitably packaged in recyclable materials and clearly labelled with Emtelle Product Code and Description where possible.

The duct is supplied on non-returnable wooden U-frames which are designed to be stored on even, stable ground; they must not be stored more than 3 high. Packaging should be recycled locally.



STANDARD DIMENSIONS & PRODUCT CODES

Nominal OD / ID	Class	Length	Colour	Interference Fit Socket	Interference Ring Seal Socket	Lengths per pallet
75 / 68	1	6m	Black	20459	21120	168
			Red	✓	✓	
75 / 69	2	6m	Black	✓	✓	
			Red		✓	
88.9 / 82	1	6m	Black	5079T	-	139
			Red	21203	-	
88.9 / 83	2	6m	Black	5079	-	
			Red	✓	-	
96.5 / 89	1	6m	Black	20159	-	115
			Red	21215	-	
96.5 / 90	2	6m	Black	3772S	-	
			Red	✓	-	
110 / 102	1	6m	Black	3769S	5331	90
			Red	5302	20423	
110 / 103	2	6m	Black	4748S	20281	
			Red	✓	✓	
125 / 117	1	6m	Black	5080T	21225	68
			Red	5333NP	21231	
125 / 118	2	6m	Black	5080	✓	
			Red	✓	✓	
140 / 131	1	6m	Black	✓	-	53
			Red	✓	-	
140 / 132	2	6m	Black	✓	-	
			Red	✓	-	
160 / 150	1	6m	Black	3769S	5338	39
			Red	5750	20211	
160 / 151	2	6m	Black	4749	20747	
			Red	✓	✓	
180 / 169	1	6m	Black	20300	20958	28
			Red	✓	21220	
200 / 188	1	6m	Black	5888	5030T	25
			Red	5893	20339	
225 / 213	1	6m	Black	20305	21274	18
			Red	20405	✓	
250 / 237	1	6m	Black	20284	20394	16
			Red	21211	20338	

